



www.genesislamp.com
 info@genesislamp.com
 Toll Free: 800-685-5267

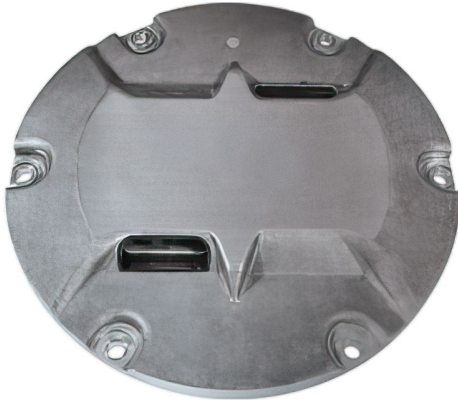
GENESIS LAMP

375 North St. Clair St.
 Painesville, OH 44077

L-852A/B/C/D LED

Style-3 Taxiway Centerline Light

IN-PAVEMENT LIGHTS - 2.1



COMPLIANCES

L-852A(L), L-852B(L), L-852C(L), L-852D(L)
 FAA AC 150/5345-46 (current edition)
 FAA Engineering Brief 67D



ETL Certified

Meets "Buy American" requirements.

PRODUCT APPLICATION

The L-852A/B/C/D LED Style-3 inset fixtures are used to delineate taxiway centerlines on both straight and curved sections, depending on the application.

L-852A: Taxiway centerline, Straight sections;
 Clearance bar (≥ 1200 Runway Visual Range (RVR))

L-852B: Taxiway centerline, Curved sections;
 (≥ 1200 RVR)

L-852C: Taxiway centerline, Straight sections;
 Clearance bar (< 1200 RVR)

L-852D: Taxiway centerline, Curved sections;
 (< 1200 RVR)

FEATURES

- High-powered LEDs with optically matched glass lenses.
- Easy to maintain. All renewal parts are field replaceable.
- Pressure test valve for seal integrity verification.
- LED life greater than 50,000 hours under high intensity conditions.
- Optional thermostatically controlled heater (Arctic Kit) that cycles on and off when temperature drops below freezing, reducing overall energy consumption.
- Seals tested to resist Cryotech XT350, EX180, and E36 de-icing fluids.

ORDERING INFORMATION

Order Number:

L-852 X X X XX - X X G2

Fixture Type:

- 852A = L-852A (Narrow, CAT II)
- 852B = L-852B (Wide, CAT II)
- 852C = L-852C (Narrow, CAT III)
- 852D = L-852D (Wide, CAT III)

L = LED

0 = No Arctic Kit
 1 = Arctic Kit

Color Options:

- YB = Yellow
- GB = Green
- WB = White
- GG = Green/Green
- GY = Green/Yellow
- YY = Yellow/Yellow
- WW = White/White
- WY = White/Yellow

1 = Uni
 2 = Bi

Cable Options:

1 = 1 I/O Cable
 2 = 2 I/O Cables*

G2 = Generation 2

* Available for bidirectional fixtures only

ACCESSORIES

Description	Part Number
L-868B Base Can, 24" Deep	AC2424-2Q2-00303
L-823 Primary Connector Kit (8 AWG, .320"/.430")	11174-01
L-823 Complete Kit (8 AWG, .320"/.430")	11805-01
Heat Shrink Tubing Kit	A2-20-0089-001
Flange Ring, 3/4"	AF540212Y

L-852A TRANSFORMER REQUIREMENTS

L-852A Type	Series Circuit	Fixture Load ¹	Required Transformer	Part Number
L-852A Uni	6.6A, 60Hz	7.1VA	L-830-16 (10/15W)	11717
No Arctic Kit	6.6A, 50Hz	7.1VA	L-831-16 (10/15W)	11732
	20A/6.6A, 50Hz	7.1VA	L-831-2 (30/45W)	11723
L-852A Bi	6.6A, 60Hz	12.9VA	L-831-16 (10/15W)	11717
No Arctic Kit ²	6.6A, 50Hz	12.9VA	L-830-16 (10/15W)	11732
	20A/6.6A, 50Hz	12.9VA	L-831-2 (30/45W)	11723
L-852A Uni	6.6A, 60Hz	38.3VA	L-830-1 (30/45W)	11680
With Arctic Kit	6.6A, 50Hz	38.3VA	L-831-1 (30/45W)	11710
	20A/6.6A, 50Hz	38.3VA	L-831-2 (30/45W)	11723
L-852A Bi	6.6A, 60Hz	73.8VA	L-830-4 (65W)	11683
With Arctic Kit ²	6.6A, 50Hz	73.8VA	L-831-4 (65W)	11683
	20A/6.6A, 50Hz	73.8VA	L-831-5 (65W)	11714

¹ The fixture load varies depending on the color(s). The maximum fixture load is provided.

² For a bidirectional dual-plug fixture use the transformer required for a unidirectional fixture shown above (with or without the Arctic Kit) for each plug.

L-852B TRANSFORMER REQUIREMENTS

L-852B Type	Series Circuit	Fixture Load ¹	Required Transformer	Part Number
L-852B Uni	6.6A, 60Hz	8.7VA	L-830-16 (10/15W)	11717
No Arctic Kit	6.6A, 50Hz	8.7VA	L-831-16 (10/15W)	11732
	20A/6.6A, 50Hz	8.7VA	L-831-2 (30/45W)	11723
L-852B Bi	6.6A, 60Hz	14.9VA	L-831-16 (10/15W)	11717
No Arctic Kit ²	6.6A, 50Hz	14.9VA	L-830-16 (10/15W)	11732
	20A/6.6A, 50Hz	14.9VA	L-831-2 (30/45W)	11723
L-852B Uni	6.6A, 60Hz	38.2VA	L-830-1 (30/45W)	11680
With Arctic Kit	6.6A, 50Hz	38.2VA	L-831-1 (30/45W)	11710
	20A/6.6A, 50Hz	38.2VA	L-831-2 (30/45W)	11723
L-852B Bi	6.6A, 60Hz	71.9VA	L-830-4 (65W)	11683
With Arctic Kit ²	6.6A, 50Hz	71.9VA	L-831-4 (65W)	11683
	20A/6.6A, 50Hz	71.9VA	L-831-5 (65W)	11714

¹ The fixture load varies depending on the color(s). The maximum fixture load is provided.

² For a bidirectional dual-plug fixture use the transformer required for a unidirectional fixture shown above (with or without the Arctic Kit) for each plug.



www.genesislamp.com
info@genesislamp.com
Toll Free: 800-685-5267

GENESIS LAMP

375 North St. Clair St.
Painesville, OH 44077

L-852C TRANSFORMER REQUIREMENTS

L-852C Type	Series Circuit	Fixture Load ¹	Required Transformer	Part Number
L-852C Uni	6.6A, 60Hz	12.8VA	L-830-16 (20/25W)	11717
No Arctic Kit	6.6A, 50Hz	12.8VA	L-831-16 (20/25W)	11732
	20A/6.6A, 50Hz	12.8VA	L-831-2 (30/45W)	11723
L-852C Bi	6.6A, 60Hz	22.8VA	L-831-16 (20/25W)	11717
No Arctic Kit ²	6.6A, 50Hz	22.8VA	L-830-16 (20/25W)	11732
	20A/6.6A, 50Hz	22.8VA	L-831-2 (30/45W)	11723
L-852C Uni	6.6A, 60Hz	39.2VA	L-830-1 (30/45W)	11680
With Arctic Kit	6.6A, 50Hz	39.2VA	L-831-1 (30/45W)	11710
	20A/6.6A, 50Hz	39.2VA	L-831-2 (30/45W)	11723
L-852C Bi	6.6A, 60Hz	75.5VA	L-830-4 (65W)	11683
With Arctic Kit ²	6.6A, 50Hz	75.5VA	L-831-4 (65W)	11683
	20A/6.6A, 50Hz	75.5VA	L-831-5 (65W)	11714

¹ The fixture load varies depending on the color(s). Does not include isolation-transformer load.

² For a bidirectional dual-plug fixture use the transformer required for a unidirectional fixture shown above (with or without the Arctic Kit) for each plug.

L-852D TRANSFORMER REQUIREMENTS

L-852D Type	Series Circuit	Fixture Load ¹	Required Transformer	Part Number
L-852D Uni	6.6A, 60Hz	12.8VA	L-830-16 (10/15W)	11717
No Arctic Kit	6.6A, 50Hz	12.8VA	L-831-16 (10/15W)	11732
	20A/6.6A, 50Hz	12.8VA	L-831-2 (30/45W)	11723
L-852D Bi	6.6A, 60Hz	22.8VA	L-830-17 (20/25W)	11729
No Arctic Kit ²	6.6A, 50Hz	22.8VA	L-831-17 (20/25W)	11733
	20A/6.6A, 50Hz	22.8VA	L-831-2 (30/45W)	11723
L-852D Uni	6.6A, 60Hz	39.2VA	L-830-1 (30/45W)	11680
With Arctic Kit	6.6A, 50Hz	39.2VA	L-831-1 (30/45W)	11710
	20A/6.6A, 50Hz	39.2VA	L-831-2 (30/45W)	11723
L-852D Bi	6.6A, 60Hz	75.5VA	L-830-4 (65W)	11683
With Arctic Kit ²	6.6A, 50Hz	75.5VA	L-831-4 (65W)	11683
	20A/6.6A, 50Hz	75.5VA	L-831-5 (65W)	11714

¹ The fixture load varies depending on the color(s). Does not include isolation-transformer load.

² For a bidirectional dual-plug fixture use the transformer required for a unidirectional fixture shown above (with or without the Arctic Kit) for each plug.



www.genesislamp.com

info@genesislamp.com

Toll Free: 800-685-5267

GENESIS LAMP

375 North St. Clair St.
Painesville, OH 44077

RENEWAL PARTS

Used On	Description	Part Number
A, B, C, D	Air Schrader Valve, 1/8 (12)	A1-05-0553-001
A, B, C, D	Cable Replacement Kit – Includes cable, tuff seal 2-hole, connectors, and O-Ring	K1-02-0003-001
A, B, C, D	Prism Replacement Kit, UniBi – Includes prism, prism seal, spacer, retention plate, and O-Ring	K1-02-0029-001
A, B, C, D	Light Engine Replacement Kit, UniBi – Includes light engine assembly and O-Ring for each color	
The kit part numbers are listed below:		
D	White	K1-02-0019-005
A, C	Yellow	K1-02-0019-006
A, C	Green	K1-02-0019-007
B, D	Yellow	K1-02-0019-008
B, D	Green	K1-02-0019-009
A, B, C, D	Heater Replacement Kit for Single Heater	K1-02-0016-001
A, B, C, D	Heater Replacement Kit for Dual Heater	K1-02-0016-002
A, B, C, D	Driver Board Replacement Kit, UniBi – Includes PWA Driver Board and O-Ring	K1-02-0028-002
A, B, C, D	Grounding Lug Replacement Kit	K2-02-0005-001

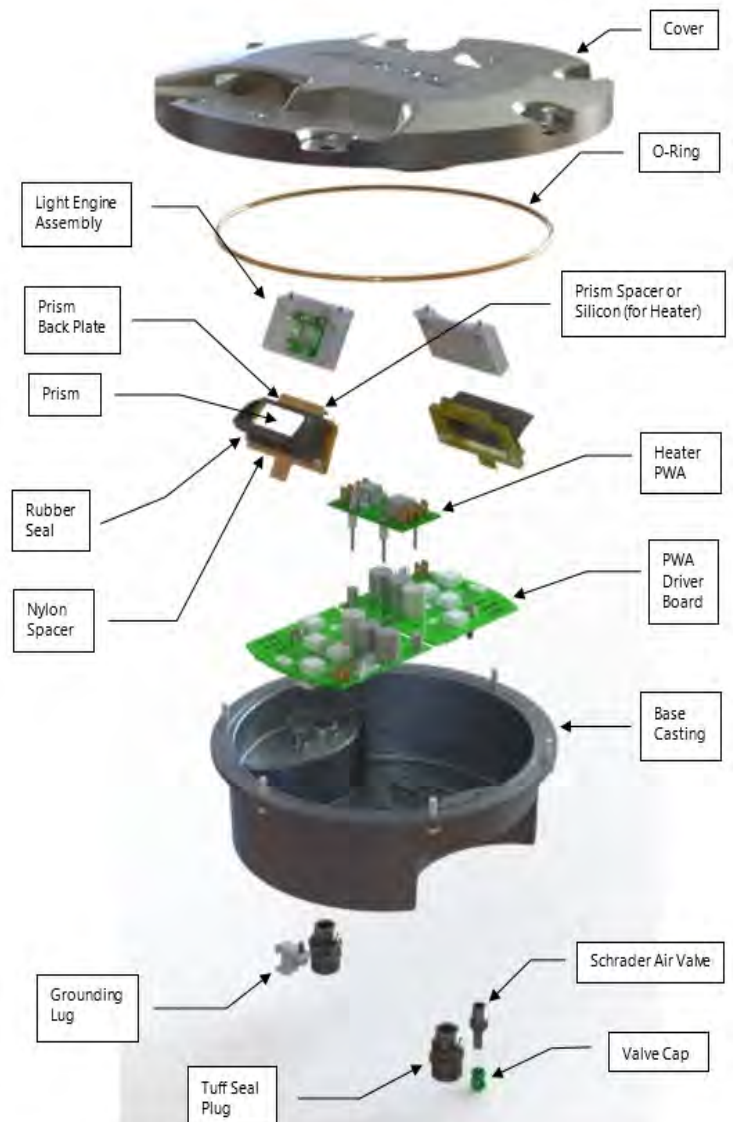
WEIGHT AND DIMENSIONS

Weight: Approximately 10.2 pounds

Dimensions:

Height	3.93 inches
Outer Diameter	11.94 inches
Bolt-Circle Diameter	11.25 inches

EXPLODED VIEW



GENESIS LAMP

www.genesislamp.com
info@genesislamp.com
Toll Free: 800-685-5267

375 North St. Clair St.
Painesville, OH 44077