

# Airport Lighting

Genesis Lamp is Your Source for  
Airfield Lighting Products

Replacement Lamps • Fixtures • Accessories



---

**GENESIS LAMP**

(800) 685-5267 • [genesislamp.com](http://genesislamp.com)

## Airport Lighting

Genesis Lamp is an Ohio-based supplier of airport light bulbs and lighting systems. Our manufacturing and distribution capabilities allow us to supply virtually every type of airport lamp in any volume required.

Genesis Lamp is a leading distributor of aviation, and obstruction lighting products from Honeywell, Osram/Sylvania, Hughey & Phillips LLC, Crouse-Hinds, ADB Airfield Solutions and ATG Airports.

### Runway & Taxiway Elevated Lighting

We are a major distributor of L-861 and L-862 fixtures and parts. You can count on us for all of your lighting needs, including extended life bulbs, glass lenses, sockets for incandescent T10 lamps, sockets for quartz 2 pin pre-focus lamps, cord sets, couplers or risers. Genesis Lamp is built on strong technical capabilities and our company is the largest supplier of high-quality flash lamps to the Federal Aviation Administration and the US Department of Transportation. We also provide lighting to the US Navy and the US Air Force.

### Genesis Lamp is your source for:

- |                              |                                |
|------------------------------|--------------------------------|
| <b>Replacement Bulbs</b>     | <b>Power Equipment</b>         |
| <b>In Pavement Lighting</b>  | <b>Guidance Signs</b>          |
| <b>Elevated Lighting</b>     | <b>Cables &amp; Connectors</b> |
| <b>Approach Lighting</b>     | <b>Navigational Aids</b>       |
| <b>Windsocks &amp; Cones</b> | <b>Base Plates &amp; Cans</b>  |

### The Genesis Lamp Mission For Over 30 Years

Here at Genesis Lamp, we are committed to continuing our 30 year tradition of providing our customers with the most courteous, efficient and professional service we can give. We give all of our customers that outstanding service, regardless of whether they are purchasing a huge order or a single replacement bulb. No matter what you need, we want to be there to fulfill all of your state-of-the-art lighting product needs.

Please contact Frank Laszlo with any questions.

frank@genesislamp.com | info@genesislamp.com

Order online | www.genesislamp.com



## Genesis Lamp PathFinder L-861 Airport Elevated Runway Light



Lens  
(half lens shown  
for cutaway view)

The combination of our affordable fixture, EXM extended life bulbs, low energy use and low maintenance requirements makes this the most versatile and economical fixture in the industry.

- Meets FAA specifications (certification pending)
- Available with choice of lamps. Quartz or incandescent - 30W or 45W.
- Weatherproof clamp and gasket for easy lamp changes.
- Replaceable components

## PathFinder L-861 T (LED)

### FAA Approved Elevated Taxiway Light



The Pathfinder L-861 T (LED) is used as an elevated light fixture for airport taxiway edge light powered by a constant current regulator (CCR) with 3 step brightness.

- Long Life LED source, 100,000 hours resulting in less maintenance

Replacement parts  
M50-61 Blue Lens  
M150-3L Gasket  
M40-1 Ring Clamp

## Solar Airfield Lights



Solar Aviation & Taxiway Light  
AV-70



Solar Aviation Light  
AV-426



Elevated Runway Guard Light  
AV-ERGL



Call for pricing

# Airport Lighting

## A. Quartz Halogen Beacon Bulb - Uses : Beacon Call for Pricing

PRODUCT	SKU#	WATTS
1M / T7BP	AL-002-0001	1000 w

## B. PAR 64 Bulbs - Uses : Beacon

PRODUCT	SKU#	WATTS
Q1000 PAR 64/NSP		120v/1000w

## C. Metal Halide Bulbs

PRODUCT/SKU#	BASE TYPE	BULB	WATTS
M1000U	Mog. Base	BT56	1000w
M175U	Mog. Base	BT28	175w
M250U	Mog. Base	BT28	250w
M400U	Mog. Base	BT37	400w
M175/U/MED	Med Base	E17	175w
MH150/UVS/4K	G12 Base		

## D. Halogen Pre-Focus Lamps - Uses: In Pavement Runway Bulbs

### 45 Watt In Pavement Runway Bulbs

GN464	AL-003-0010	6.6A/45w
GN464-F	AL-003-0011	6.6A/45w
GN156	AL-003_0012	6.6A/45w
GN156-F	AL-003-0013	6.6A/45w

### 65 Watt In Pavement Runway Bulbs

GN173	AL-003-0016	6.6A/65w
GN173-F	AL-003-0014	6.6A/65w
GN484	AL-003-0017	6.6A/65w
GN484-F	AL-003-0015	6.6A/65w

### 100 Watt In Pavement Runway Bulbs

GN231	AL-003-0002	100w/6.6A
-------	-------------	-----------

### 125 Watt In Pavement Runway Bulbs

GN041-2S	AL-003-0003	125w/6.6A
----------	-------------	-----------

### 200 Watt In Pavement Runway Bulbs

GN-251	AL-003-0004	200w/6.6A
GN041-IS	AL-003-0005	200w/6.6A

## E. Halogen Pre-Focus - Uses: Threshold Light Bulbs

PRODUCT	SKU#	WATTS
GN-703 Fem	AL-004-0018	500 w
GN-703 Male	AL-004-0019	500 w

## F. Bi-Pin Light Bulbs

PRODUCT	SKU#	WATTS
GY8/100	AL-005-0024	100watt
Par 38	AL-006-0030	6.6a/45w (Wind cone replacement bulbs)

## G. Par 38 Bulbs - Uses: Elevated Approach Lighting

80PAR38/HAL/S/SP10 (80w/120v)  
 Note: Replaces the 120w/PAR38



A. Quartz Halogen Bulbs

C. Metal Halide Bulbs



B. Par 64 Bulbs



D. Runway Centerline Bulbs



Fused



No Fuse



E. Threshold Light Bulbs



F. Bi-Pin Light Bulbs



G. Elevated Approach Lighting

# Airport Lighting

## G. Elevated Approach Lighting Cont'd

PRODUCT	SKU#	WATTS
12.5v/250w/PAR56	AL-006-0033	250w
300/PAR56/MFL	AL-006-0034	300w
300/PAR56/WFL	AL-006-0035	300w
300/PAR56/NSP	AL-006-0036	300w
6.6A/PAR56/2	AL-006-0037	200w
6.6A/PAR56/3	AL-006-0038	200w
6.6A/PAR56/4	AL-006-0039	200w
6.6A/PAR56/5	AL-006-0040	45w
GN34-FT	AL-006-0041	120w
GN-34	AL-006-0043	120w
Q20A/PAR56/1/C	AL-006-0044	500w
Q20A/PAR56/2	AL-006-0045	500w
Q20A/PAR56/3	AL-006-0046	500w
Q20A/PAR56/C	AL-006-0047	300w
500/PAR56/WFL	AL-006-0048	500w
500/PAR56/MFL	AL-006-0049	500w
500/PAR56/NSP	AL-006-0050	500w
500/PAR64/MFL	AL-006-0051	500w
500/PAR64/NSP	AL-006-0052	500w
500/PAR64/WFL	AL-006-0053	500w
1000/PAR64/NSP	AL-006-0054	1000w
Q6.6A/PAR64/2P	AL-006-0055	200w
Q6.6A/PAR64/3P	AL-006-0056	300w

## H. Elevated Edge Lights

PRODUCT	SKU#	WATTS
GNQ	AL-007-0057	12v/20w
20531	AL-007-0058	200w
G6.35	AL-007-0059	6.6A 100w
2PPF	AL-007-0060	6.6A 175w
G6.35	AL-007-0061	6.6A 200w
G6.35	AL-007-0062	6.6A 45w
EVV	AL-007-0067	120w
EWR	AL-007-0068	150w
EXL	AL-007-0069	30w
EXM	AL-007-0070	45w
EXM-LL	AL-007-0070L	30w
EZL	AL-007-0071	200w
EXL-LL	AL-007-0072	30w
Q200	AL-007-0073	T4CL1000hr



Base type  
GY9.5/GZ9.5

## I. Inset In pavement Lighting

PRODUCT	SKU#	WATTS
DCR	AL-008-0077	6.6A 45w
DCR	AL-008-0074	6.6A 115w
DCR	AL-008-0075	6.6A 185w
DCR	AL-008-0076	6.6A 200w

## J. Low & Medium Intensity Runway Lights

PRODUCT	SKU#	WATTS
A 19	AL-009-0080	40w/120v Clr
A 19	AL-009-0082	60w/130v Frst
A 21	AL-009-0087	50w/30v frst
A 21	AL-009-0089	60w/120v



G. Elevated Approach Lighting



H. Elevated Edge Lights



I. Inset In pavement Lighting



J. Low & Medium Intensity Runway Lights

Airport Beacon Bulbs  
PS40 Bulb

## Airport, Traffic, Obstruction Bulbs

PRODUCT	SKU#	WATTS
PS 40	AL-009-0095	620w/130v
PS 40	AL-009-0620	700w/120v
PS 40	AL-009-0700	700w/230v
A 21	AL-009-0085	116w/130v
A 21	AL-009-0086	116w/230v
A 21	AL-009-0093	69w/130v

# Airport Lighting

## K. MR 16 Bulbs - Common Uses: Inset Fixture, Signs

PRODUCT	TERMINALS	SKU#
<b>6.6A/30 Watt Bulbs</b>		
GN31F	Fem	AL-010-0101
GN31MF	Male, Fem	AL-010-0102
EZA	2-Pin	AL-010-0103
EZA-4	Fem	AL-010-0104
<b>6.6A/32 Watt Bulbs</b>		
GN127	Flag	AL-010-0105
<b>6.6A/45 Watt Bulbs</b>		
GN45F	Fem	AL-010-0106
GN45M	Male	AL-010-0108
GN45RF	Round, Fem	AL-010-0109
EZC	2-Pin	AL-010-0110
<b>6.6A/48 Watt Bulbs</b>		
GN37MF	Male, Fem	AL-010-0112
GN37F	Female	AL-010-0113
GN37M	Male	AL-010-0114
GN37RF	Round, Fem	AL-010-0115
GN116	Flag	AL-010-0118
<b>12v/50 Watt Bulbs</b>		
EXT	2-Pin	AL-010-0117
EXN	2-Pin	AL-010-0122
<b>6.6A/62 Watt Bulbs</b>		
GN624	12" Fem	AL-010-0188
GN169	Flag	AL-010-0189
GN590	2-Pin	AL-010-0119
GN934	15" Fem	AL-010-0120
<b>12v/75 Watt Bulbs</b>		
EYC	2-Pin	AL-010-0121
<b>6.6A/105 Watt Bulbs</b>		
GN128	Flag	AL-010-0095
GN39F	Fem	AL-010-0096
GN39M	Male	AL-010-0097
GN39RF	Round, Fem	AL-010-0098
<b>6.6A/150 Watt Bulbs</b>		
GN710	15" Fem	AL-010-0100



K. 6.6A/48w/MR16

K. 6.6A/48w/GN116



L. PK30d Bulbs



MR 11 Bulbs

## L. PK30d Bulbs - Common Uses: PAPI, Guard Light, Elevated H.I.

PRODUCT	SKU#	WATTS
<b>45 Watt Bulbs</b>		
PK30d	AL-011-0130	6.6A-Male / 32mm
PK30d	AL-011-0132	6.6A-Fem / 32mm
PK30d	AL-011-0133	6.6A-Fem / 28mm
PK30d	AL-011-0134	6.6A-Male / 28mm
<b>65 Watt Bulbs</b>		
PK30d	AL-011-0135	6.6A Fem
PK30d	AL-011-0136	6.6A Male
<b>100 Watt Bulbs</b>		
PK30d	AL-011-0123	6.6A Fem
PK30d	AL-011-0124	6.6A Male
<b>150 Watt Bulbs</b>		
PK30d	AL-011-0126	6.6A Fem
PK30d	AL-011-0127	6.6A Male
<b>200 Watt Bulbs</b>		
PK30d	AL-011-0129	6.6A Fem
PK30d	AL-011-0128	6.6A Male



## M. Xenon Strobes - Uses: Approach, Runway End Identification

Bulbs FT = Flash Technology

PRODUCT	SKU#
GN33Q	AL-012-0137
GN35Q	AL-012-0138
GN34	AL-012-0143
GN34FT	AL-006-0041
GN-52FB	AL-012-0039
GN-54DSBAL	AL-012-0040
GN73	AL-012-0041
GN80	AL-012-0044
GN81U	AL-012-0043



## N. Taxiway Edge Identification Bulbs



## N. T-Shape Incandescent Bulbs - Uses: Taxiway Edge Identification

PRODUCT	SKU#	WATTS
T8	AL-013-0142	6.6A/30w
T8	AL-013-0143	6.6A/45w
T 10/P	AL-013-0145	6.6A/30w
T 10/P	AL-011-0146	6.6A/45w
7668C	AL-7668C	6.6A/100w
6936C	67861	6.6A/210w

# Cables & Connectors

## L823 Connectors L823 Primary Connector Kits

Style 3 & 10		Item #
D4/D4	8 AWG	AL-140-0200
D3/D3	6 AWG	AL-140-0201

### L823 Fixture Leads

Style 1 - 2 single wires - 16 AWG	AL-140-0202
-----------------------------------	-------------

### L823 Secondary Connector Kits

Style 4	Plug, two wires	P/N 90P
Style 11	Receptacle, two wires	P/N 90R
Style 5	Plug, two conductor cable	P/N 91P
Style 12	Receptacle, two conductor cable	P/N 91R

### L823 Secondary Extension Cords - 6 ft.

Style 1 & 7	12-AWG cable	11326-03
Style 1 & 8	12-AWG cable	11339-03

### Heat Shrink Kit

1.5" ID x 16" Long	11475
--------------------	-------

## NEW! - L-823 Complete Kit Primary Connector Kits

Part #: 11805-Series

Description: Each primary connector kit includes:

- Style 3 male pin
- Style 10 female receptacle
- Style 3 male housing
- Style 10 male housing
- Instruction sheet
- Paper wipe for cleaning

## Airport Lighting Cable

FAA L-824 Type C 5000 Volts Unshielded 90°

Suitable for installation in conduit, ducts or direct burial, for use in airport lighting circuits and control circuits.



Primary Connector Kits are used to install Isolation Transformers into series circuits, and to make serviceable splice connections or test points in L-824 Airport Lighting Cable on primary power



Primary Connector Kit



Heat Shrink



Fixture Leads



Secondary Connector Kit



NEW! - L-823 Complete Kit

## Runway and Taxiway Lenses L-861 Glass Replacement Lenses

Yellow/Clear

L861-D-Y/C

Yellow

L861-D-Y

Blue

L861-D-B

Blue/Red

L861-D-B/R

Clear

L861-D-CL

Clear/Red

L861-D-CL/R

Green

L861-D-G

Green/Red

L861-D-G/R

Obscure/Green

L861-D-O/G

Red

L861-D-R



Yellow/Clear

Yellow



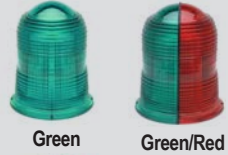
Blue

Blue/Red



Clear

Clear/Red



Green

Green/Red



Obscure/Green

Red

## L-862 Glass Replacement Lenses

### 180 Degree Inner Lenses

L862-IL-YEL Yellow

L862-IL-BL Blue

L862-IL-C Clear

L862-IL-GR Green

L862-IL-R Red



Yellow

Blue

Clear



Green

Red

### Outer Lenses

L862-OL-C Clear

L862-OL-RG Red/Green (Right Toe-In)

L862-OL-GR Green/Red (Left Toe-In)



Clear

Red / Green  
Green / Red

## Replacement Windsocks & Cones

### Windsocks

18" x 96" Orange nylon windsock AL-140-0060

36" X 12' Orange nylon windsock AL-140-0061

18" X 5' Orange nylon windsock AL-140-0062

24" X 8' Orange nylon windsock AL-140-0063

### L-806 Wind Cone - L806 (external lit) Wind cone

Call for current pricing on windsocks, cones and lenses



# Runway & Taxiway Elevated Lighting

## PathFinder L-861 Medium Intensity - Elevated Taxiway and Runway Edge Light



**HOW TO ORDER:** A complete fixture assembly will consist of separate order items for the L-861 Assembly. Taxiway edge lights are usually blue (B); Threshold lights are usually green/red (GR). Example: GN-861-B-45H-14 is a 14 inch high fixture with a blue lens and a 45 watt halogen lamp.

**G N 8 6 1** - - - - -

Fixture Type:	Lens Color:	Lamp Type, Power	Overall Height
GN 861	C = Clear Y = Yellow G = Green R = Red B = Blue For split options use two lens colors.	30T = 30 watt, T10/IP 45T = 45 watt, T10/P 30H = 30 watt Halogen EXL 45H = 45 watt Halogen EXM	14 = 14 inches (standard height) 24 = 24 Inches 30 = 30 Inches

## FAA L-862 High Intensity - Elevated Runway Edge Light



L-862 Fixture is supplied with a clear outer lens. Lens color options indicate inner lens colors.

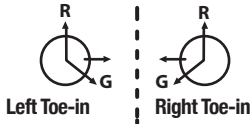
**G N 8 6 2** - - - - -

Fixture Type:	Lens Color:	Lamp Type, Power	Overall Height
GN 862	C = Clear Y = Yellow G = Green R = Red B = Blue	45 = 45 watt / EXM 120 = 120 watt / EVV 150 = 150 watt / EWR 200 = 200 watt / EZL	14 = 14 inches (standard height) 24 = 24 Inches 30 = 30 Inches

L-862E High Intensity elevated runway threshold & end of runway light.

**G N 8 6 2 E** - - - - -

Fixture Type:	Lens Color:	Lamp Type, Power	Overall Height
GN 862E	GR = Green/Red Left Toe-in Green RG = Red/Green Right Toe-in Green	150 = 150 watt / EWR 200 = 200 watt / EZL	14 = 14 inches 24 = 24 Inches 30 = 30 Inches



### L 861 Fixture & Replacement Parts

Description	Item #
L-861 Entire fixture (create part number above)	
5-1/2" riser for 14" fixture	AL-110-0001
15-1/2" riser for 24" fixture	AL-110-0002
21-1/2" riser for 30" fixture	AL-110-0003
Clamp band-stainless steel	AL-110-0004
Flat gasket	AL-110-0005
O-ring seal	AL-110-0006
Frangible metal coupling 1.5"	AL-110-0007
Frangible metal coupling 2"	AL-110-0008
Socket, quartz w/bracket	AL-110-0013
Socket, for T-10 prefocus lamp	AL-110-0016
Halogen lamp socket	AL-110-0017
30 in. Stake-mount	AL-110-0018
Cord set for 14"- 31" fixture	AL-110-0011
Heat Shrink Kit	AL-110-0021
L867 Base Plates 12" x 1.5" Hub	AL-110-0019
12" x 2" Hub	AL-110-0020

Call for pricing

### Light Bulbs

Description	Item #	Power
EXL	AL-007-0069	30w
EXM	AL-007-0070	45w
EVV	AL-007-0067	120w
EWR	AL-007-0068	150w
EZL	AL-007-0071	200w
T 10/1P	AL-013-0145	6.6A/30w
T 10/P	AL-011-0146	6.6A/45w

### L 862 Fixture & Replacement Parts

Description	Item #
L-862 Entire Fixture	(create part number above)
L-862 Clamp band	AL-120-0060
L-862 Lens gasket	AL-120-0061
L-862 Socket	AL-120-0017
L-862 Socket Mounting Plate	AL-120-0071
L-862 Inner Lens (see back cover for all colors)	
L-862 Inner Lens Bracket	AL-120-0068
L-862 Lens, Inner Spring Clip	AL-120-0070
L-862 Outer Lens	

Call for pricing

## Approach & Threshold Lighting

Genesis Lamp offers these and a full array of other airfield lighting products. Whether you're looking for replacement light bulbs for airfield lighting or related products like airport beacons base plates, mounting stakes, transformer bases and windsocks, we have what you need.

### L-801A Airport Rotating Beacon - HBM 150/2

Compliance with Standards:  
 FAA: L-801 A/C150/5345-12  
 ICAO: Annex 14, para 5.3.3

#### Applications

The L-801A Airport Rotating Beacon is used primarily for night operations at airports as an identification and location marker. The dual-light beacon (clear and aviation green lenses) features 150-watt pulse-start lamps and a patented design that makes it maintenance free, except for lamp replacement.



### Beacon Tipdown Pole



## Base Plates & Cans

### Airport Light Bases and Transformer Housings



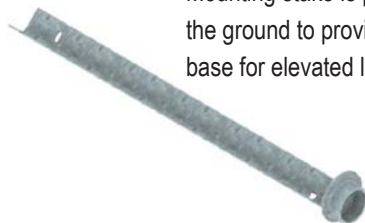
### L-867 CORTEN BASE PLATE

Shipped with gasket and hardware



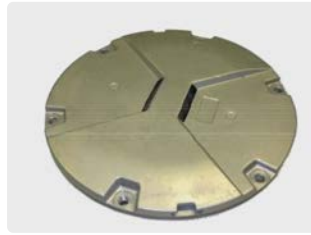
### Mounting Stake

Mounting stake is placed into the ground to provide a stable base for elevated lights.



### L-852

LED Inset Light Taxiway Centerline, Stop Bar, Holding Position Light



### Inset Runway Edge Light

Taxiway centreline, stopbar and intermediate holding positions



### L-850A

LED Inset Runway Centerline, Rapid Exit Taxiway Indicator, Status, Takeoff Hold or Intersection Light



### E-2952/E-2968

Incandescent High or Medium Intensity Approach, Threshold or End Light



#### APPLICATIONS

Runway centerline for FAA & ICAO CAT I, II and III and military runways, L850-T RWSL, THL and RIL for FAA, R.E.T.I.L. for ICAO and FAA LAHSO (L-850A) applications.

#### APPLICATIONS

MFL is a multi-function light, which is generally used for approach centreline, crossbars and side rows lighting.

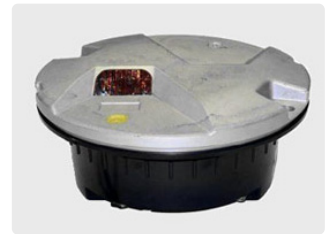
### LED Inset Runway Guard Light L-852G(L)

Runway Guard Light for FAA, ICAO CAT I,II and III and military taxiways



### Inset Runway Guard Light L-852G

Runway Guard Light for ICAO CAT I,II and III, FAA and military taxiways



### M4 SCARE-AWAY Bird Control Cannon





## Airfield Guidance Signs

AGM airport guidance signs are known for their structural and electrical performance.

### L-858 LED signs

- Use 80% less power than traditional lamps
- Long-lasting, energy-efficient LEDs
- Crisp, clean light with minimal bloom or ground splash makes them easier to acquire and read
- Available in FAA types Y, L, R & B  
Certified to FAA AC 15/5345-44 (Current Edition)  
Also available in halogen and incandescent

Call for details and pricing.

## Visual Aid Markers for Airports

### 650 L-853 & A750 (L-853) SERIES AIRPORT MARKERS

A650 & A750 Airport Markers meet FAA L-853 specifications. A650 for ground series and A750 for surface mount series are tubular delineators for Airport applications.

Available Heights: 14" 19" 24" 30" & 36".  
Colors: White, Orange, Yellow, Blue, Red

**The A650 Ground Mount is a three part assembly**  
Post, Inner-core and hinge, Soil anchor

**The A750 Surface Mount is a four part assembly**  
Post, Inner-core and hinge, 8" round base  
Pin (can be quick release) Call for details and pricing.

### L853 Type II, FLEXSTAKE Ordering Part Numbers:

Tube Color	Reflector Color	Height	Application	Mounting Type
Blue - B	Blue - B	18"	Taxiway-TW	Ground
White - W	White - W	24"	Runway-RW	65X
Red - R	Red - R	30"	End-RE	Surface
Green - G	Green - G		Threshold-RT	75X

Sample part number for a ground mount taxiway marker, 30" L853-B-BTW-65X

## Frangible Couplings

L-862 Runway Edge Frangible Coupling, Outside Bottom Thread 2"	GN-0605
L-849 REIL Coupling For 1" diameter riser, 1.5" thread for 1935 baseplate	GN-62B0064
Frangible Coupling, 2" Thread For 1" diameter riser, 2" thread for 1932 baseplate	GN-961AT
1.5" Frangible Metal Coupling for 1" dia. Riser, 1.5" Thread for 1935 Baseplate or AW2205 Mounting Stake	GN-0063
L862 Runway Edge (2-inch Column)	GN-62B0605
L-849 REIL	GN-62B0064
L858 (Triangle Shaped) Sign	GN-62B0580-X
Flange: Sig. Series Sign	GN-62A2142
Flange: Sign PAPI, REIL	GN-62B0107-2

### LED Guidance Signs



### 650 L-853 AIRPORT MARKERS

#### Ground Mount



#### A750 (L-853) SERIES Surface Mount



### Frangible Couplings



# Power & Control Equipment

## Series Isolation Transformers

Approved in accordance with FAA circular 150/5345-47 and certified to FAA L-830 and L-831, these series isolation transformers are used for isolating high operating voltages, and are able to operate at 50 or 60 Hertz frequencies. In addition, they can operate safely while submerged in water.



FAA Designation	Wattage	Pri./Sec. Amps	Item Number	Weight (lbs)	Call for Pricing
L830-16 LED	10-15w	6.6a / 6.6a	AL-130-0039	3.6 lbs	
L830-17 LED	20-25w	6.6a / 6.6a	AL-130-0038	3.6 lbs	
L830-1	30-45w	6.6a / 6.6a	AL-130-0041	4.2 lbs	
L830-2	30-45w	20a / 6.6a	AL-130-0040	4.2 lbs	
L830-3	65 w	6.6a / 6.6a	AL-130-0042	4.5 lbs	
L830-4	100w	6.6a / 6.6a	AL-130-0043	8.5 lbs	
L830-5	100w	20a / 6.6a	AL-130-0044	8.5 lbs	
L830-18	150w	6.6a / 6.6a	AL-130-0045	8.5 lbs	
L830-19	150w	20a / 6.6a	AL-130-0046	8.5 lbs	
L830-6	200w	6.6a / 6.6a	AL-130-0047	10.3 lbs	
L830-7	200w	20a / 6.6a	AL-130-0048	10.3 lbs	
L830-10	300w	6.6a / 6.6a	AL-130-0049	11.5 lbs	
L830-11	300w	20a / 6.6a	AL-130-0050	12.5 lbs	
L830-9	300w	20a / 20a	AL-130-0051	12.5 lbs	
L830-14	500w	6.6a / 6.6a	AL-130-0052	18.5 lbs	
L830-15	500w	20a / 6.6a	AL-130-0053	18.5 lbs	
L830-13	500w	20a / 20a	AL-130-0054	18.5 lbs	

## Max Power Constant Current Regulators

Max Power Constant Current Regulators For Airport Lighting (FAA L-828 & L-829) These top of the line regulators are built by a company with over 50 years of manufacturing experience in the airport and heliport lighting field. They are designed and manufactured in accordance with FAA Circular AC 150/5345-20G. Prior to sale and installation, industry experts put all regulators through a series of rigorous testing.

### FAA L-827 MONITOR

Description	Catalog No.*	Class	Style*
For 2 & 4KW Regulator	MRML8273B-01	1	1
For 7.5KW Regulator	MRML8273B-02	1	1
For 10KW Regulator	MRML8273B-03	1	1
For 15KW Regulator	MRML8273B-04	1	1
For 20KW Regulator	MRML8273B-05	1	1
For 30KW Regulator	MRML8273B-06	1	1
For 30KW Regulator	MRML8275B-07	2	2
For 50KW Regulator	MRML8275B-08	2	2

**REMARKS** - For adding to 3 step regulator

\*For Style 2, 5 Step Regulator, change 3B to 5B in Catalog No.

**CONSTANT CURRENT REGULATOR OPTIONAL EQUIPMENT:**

FAA L-827 Monitor with regulator change catalog L-828 to L-829

Call for Pricing



Ferromagnetic Reactor Type  
Air Cooled  
\*Comparable to Ferroresonant Type\*

# Obstruction Lighting

Genesis Lamp carries a complete line of obstruction lighting products. Obstruction lighting products are classified in three categories: Low, Medium and High intensity.

We supply replacement flash tubes for H&P (Hughey Phillips), Flash Technology Systems, TWR Lighting Systems, EG&G StrobeGuard Systems and Dialight.

Genesis Lamp is one of the few manufacturers capable of producing quality obstruction strobe lights. At Genesis Lamp we have been manufacturing obstruction strobe lights for over 30 years.



# Heliport Lighting

Genesis Lamp offers a full line of heliport lighting landing equipment and heliport lighting systems. Our line of heliport lights including perimeter lights, obstruction lights, floodlights, beacons and lighted wind cones. Our lights are offered with incandescent or LED light bulb versions.

## Types of Heliport Lighting

- FATO Perimeter Lights  
Final Approach & Takeoff Area (FATO)
- TLOF Touchdown Lights  
Touchdown and Lift-off Area (TLOF)
- Landing Direction Lights
- Floodlights
- Lighted Wind Cones
- Heliport Beacons
- Heliport Lighting Controllers



## Obstruction Lighting Fixtures & Hardware



FlashGuard™ 3000



L-810 LED Single



L-810 LED SPECTRA Double



HORIZON™ AC Series



DuroSite™ LED Visual Signal Lights



Control and Monitoring Systems



Vigilant LED Based L-810





## **GENESIS LAMP**

375 North St. Clair Street  
Painesville, OH 44077

800-685-5267

[www.genesislamp.com](http://www.genesislamp.com)



# **Genesis Lamp - Your Source for Airfield Lighting**

Genesis Lamp is the largest supplier of high-quality flash lamps to the Federal Aviation Administration and the US Department of Transportation. We also provide lighting to the US Navy and the US Air Force. Our inventory includes airport lamps, taxiway lighting, approach & threshold lighting, runway lighting, and a wide variety of essential airport and airfield lighting products. Genesis Lamp Corporation specializes in manufacturing and selling only the highest quality airport lighting bulbs, fixtures and systems. Our manufacturing and distribution capabilities allow us to supply virtually every type of lamp in any volume, from a single product order to completely supplying large national and international airports.

**Order online at:  
[GenesisLamp.com](http://GenesisLamp.com)**

**Airport Light Bulbs**

**Approach & Threshold Lighting**

**Runway Lighting**

**Taxiway Lighting**

**Solar Airport Lighting**

**Transformers & Regulators**

**Windsocks & Cones**

**Glass Runway Lenses**

**Cables & Connectors**

**In Pavement Lighting**

**Elevated Lighting**

**Approach Lighting**

**Cables & Connectors**

**Guidance Signs**

**Power Equipment**

**Navigational Aids**

**Base Plates & Cans**

**PAPI Lighting Systems**